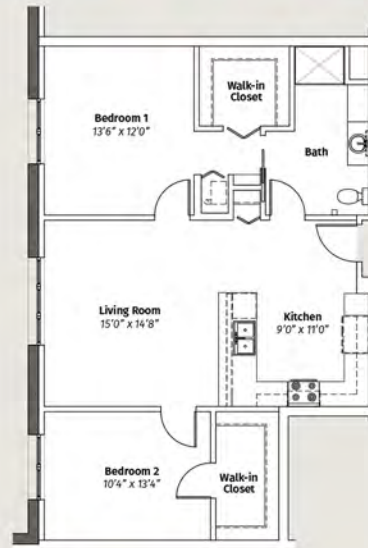




Your Arbor Place of Lisle experience includes all these amenities:

- Beautiful, functional kitchens with Energy-Star appliances: refrigerator, range, dishwasher
- Abundant living spaces with walk-in closets; private balconies in many units
- Individual heating/cooling
- On-site laundry
- Covered front entrance
- Close to shopping, banks, and restaurants
- Security technology for controlled access and monitoring
- Movie nights, game nights, activities, and clubs
- Landscaped gardens and outdoor spaces with a gazebo



TYPICAL 2-BEDROOM UNIT



TYPICAL 1-BEDROOM UNIT



EQUAL HOUSING
OPPORTUNITY



For leasing information:
(630) 637-0540